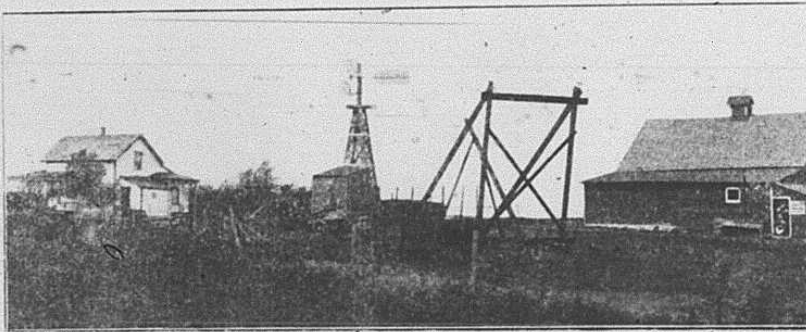


THE COURTENAY GAZETTE

Wheat is the principal crop and the chief article of export. It is of excellent quality and usually grades No. 1 hard or No. 1 northern. Oats, flax, rye, barley and speltz grow in abundance and are extensively cultivated. All kinds of vegetables common to this latitude thrive well, the finest quality of potatoes being raised here that are raised anywhere and always bring top-notch prices. The lasting qualities of the soil are attested by the fact that some of this land has been farmed for the past twenty-five years and is today producing as large crops as it did when it was first turned up to the sun. It would seem that it is inexhaustible.



A Farm Scene in Stutsman County

LAND VALUES

At the time of the first settlement of this county land could be bought for five or six dollars an acre. It soon became apparent to the industrious husbandman that land was much more valuable than that and the price began to increase and there has never been a time since then that the price has not been on the raise. Many of those who availed themselves of the opportunity to purchase land have found that the soil was so productive that it was nothing uncommon to pay for the land out of the proceeds of one crop. About 125,000 acres have changed hands during the present year and the price of land has doubled in the last three years. Three fourths of the land that has been sold this year has been to people who will either farm it themselves, or have some one on it, resulting in a rapid increase in farm population and a constant addition to the wealth and taxable property of the county.

FINANCIAL CONDITION

The county is in a very flourishing condition financially. The bonded indebtedness is only \$44,000 and we have one of the largest and best constructed court houses in the state, a nice sheriff's

residence and jail, and the whole is fitted with a steam heating plant of a capacity that makes it possible to heat every corner of the buildings in the coldest weather. A large amount of money has also been expended in the building of roads throughout the county and at the present time they are nearly all in good condition.

BANKS OF THE COUNTY

There are eleven banking institutions in the county and all are doing a thriving business. All but three of these have been organized within the past five years, thus showing the prosperity of the county. We believe we are safe in saying that at the present time these banks have not less than \$2,000,000 on deposit.

POPULATION OF THE COUNTY

The population of the county in 1900 was 9,143. In 1905 it was 14,624. At that rate of increase there will be a population of 23,000 in 1910. Thus it will be seen that the population has more than doubled in the last decade. The predominating nationality is American, with Germans and Scandinavians in the order of naming. They are an industrious and law abiding class of citizens and will rank as high in civilization and high ideals in life as any county in this or any other state. The county contains thirty-one school districts and among the farm residents where there is a small group of children who need the instruction of a teacher is to be found a comfortable school building and an intelligent and competent instructor. The schools are supported largely by the income from the state school land fund with which congress endowed North Dakota on her entrance into statehood. There are also numerous church societies throughout the county and these are increasing as rapidly as there is a demand for the different denominations.

MARKETS

In the early days of the history of this county it was necessary for some of the farmers to haul their grain twenty-five or thirty miles to market and it required two days to make the trip. Now all this is changed. There are 153 miles of railroad in the county and there are numerous towns