

# The Cooperstown Courier.

VOL. 23, NO 37

COOPERSTOWN, GRIGGS CO., N. D., THURSDAY SEPTEMBER 21, 1905.

\$1.50 PER ANNUM

## The One Price DEPARTMENT STORE.

### As Fall Trade Is Now At Hand

we have been filling up our store the past week with Goods that are snappy and up-to-date, everything that people want in merchandise.

#### Dress Goods.

We are now displaying an elegant line of Dress Goods in latest shades and strictly up-to date.

#### Ladies Cloaks and Jackets.

Look before you buy. It is to your advantage to see the "Palmer Garment" line now whether you've bought or not, you'll surely find a garment that you want. Come in and let us show them to you.

#### Special Sale of Ladies Petticoats.

Petticoat made of Mercerized Sateen with 12 inch bias flounce, trimmed with a 4 inch knife plait, and one 2 inch ruffle

SPECIAL AT 89c.

Sunburst Skirt, good quality mercerized sateen, made with a 15 inch knife pleated flounce and a 3 1-2 inch ruffle

SPECIAL AT \$1.12.

Sunburst Petticoat made of extra quality mercerized sateen with 28 inch bias flounce, flounce in three sections, consisting of a 24 inch knife pleated ruffle and one 4 inch ruffle with 2 straps of self material. Colors, Tan, Blue and Black.

SPECIAL AT \$2.19.

## Albert Larson.

## Cooperstown Tile Works

Manufacturers of

Sidewalks, Steps and Borders, Curbs and Driveways, Crossings, Collar and Barn Floors. All Work Guaranteed.

Carlander, & Carlson Props.,  
Cooperstown, North Dakota.

## J. G. WALLBRIDGE CONTRACTOR & BUILDER,

Is now ready to figure on that new building you are contemplating.

## ANOTHER PIONEER GONE

Daniel Sinclair, One of the Early Settlers of Griggs County Passes Away.

At 1:15 a. m. last Friday morning, September 15, 1905, Daniel Sinclair, of Hannaford died. The deceased had been in poor health for a long time, failing very rapidly the past year. His ailment is what is termed by doctors as Anemi—or the loss of blood from the system gradually causing loss of strength and finally starvation, the sufferer being unable to eat anything or at least to retain on his stomach what little he did eat. Daniel Sinclair was one of the early settlers of Griggs county, coming here in the spring of 1882 and settling down on a farm eight miles southwest of Cooperstown with his family where he has resided ever since. He was a good man, a good neighbor and a good citizen and in addition to that he was a christian man, being one of the charter members of the Presbyterian church at Hannaford, and he died strong in the belief that those who were faithful to the Master would reap the reward when the final summons came. In the death of Daniel Sinclair

the county loses one of its best citizens and those who have enjoyed his acquaintance during all the years, have lost a warm friend. Mrs. Sinclair and the other members of the family have the sympathy of the people of Griggs county in their deep sorrow. The deceased was born at St. Andrews, Quebec, June 12, 1837, being 68 years old last June. He moved with his parents to St. Mary's, Ontario, later, and was married at that place to Miss Mary Jane Bothwell, in 1863, his wife surviving him. From this union seven children were born and are now living as follows: Fred A. Sinclair, of Portal; Andrew Sinclair, of Courtney; Wallace J., James H., Edith, William D. and Sarah Jane. About a year ago the family moved to Hannaford where they have since resided. The funeral took place last Sunday afternoon at Hannaford, Rev. Oscar D. Purinton, of this place conducting the services. Interment was made in the Cooperstown cemetery.

#### One Hundred Per Acre.

No man has followed closer the development of North Dakota than has President James J. Hill. That his foresight was great is proved by the fact that taking advantage of the early opportunities, he has built a colossal fortune out of what in his early days was a desert. No man is more competent to speak on the future of the state than he. In his recent speech at Grand Forks he said:

I remember when lands were selling at \$10 or \$15 an acre and it doesn't seem to be but a short time ago. And do you think that every acre of it was worth \$50? Today a few acres a few rare pieces, may be sold at \$50. I say to you that land in the Red River Valley is better worth \$100 an acre than land that is selling readily in Illinois and Iowa at \$100 an acre, because you can raise everything that they raise you can raise most of the things that they raise in greater perfection than they can and you can market it from a dollar to \$1.50 an acre less because of transportation.

Is this true, the prosperity and richness of North Dakota is merely in the dawn. The farm lands in this county will pay a good interest rate on seventy-five dollars per acre, and they will do that with four or five months' labor each year, leaving the larger portion of the year for the farmer and his family to cultivate their minds and enjoy and ideal life. On this point President Hill tersely said:

Preserve your inheritance. Keep your children on the farm and make intelligent men and women of them, and I tell you the agricultural population of this nation will compare favorably with any other in every quality that goes to make good citizenship. They have their share of intelligence and they have more than their share of patriotism. And the nation will be better off as the young men remain on the land. The farmer, if he knows it is the most independent man in the world. Keep the roof over the heads of your children and hand it down to them as homes. They will be better off; they will be better citizens; they will have every quality that

goes to make a good citizen that we all respect and admire, much more than if you send them into uncertain avenues of other occupations. —Inter-Ocean.

#### INTENSIFIED FARMING.

The population of North Dakota approaches half a million. That such a population could be supported in the state would have been regarded as impossible by observers of a generation or more ago, had anyone been reckless enough to predict it. Yet that population is being supported well. And it is constantly and rapidly increasing. It is true that most of the land which has generally been regarded as desirable has been appropriated, but there is still more land of another class, which has been shown to be capable of producing big crops, which is now coming into favor, and people are settling rapidly on it. It is less than half a dozen years since the northwestern corner of the state was looked on with distrust, and yet since that time the settlers there have reaped one big crop after another, and have made money faster than those of any other section of the state.

With all this there is room for vast improvements in methods of cultivation and of farm management generally. The average wheat yield of the state is less than fifteen bushels per acre. This is not due to soil or climate, but largely to shiftless methods. There are a few acres in the cultivated portion of the state which, one year with another are not capable of raising from 20 to 30 bushels of wheat if soil and climate were utilized to say anything like their proper limit. There are thousand of acres in the state this year which will not be harvested because the land is too wet for work, and will remain too wet until the grain is shelled out. We cannot regulate the rainfall, but we can to a very great degree, regulate the disposition of the rain after it has fallen, and if the fields are flooded, that condition is due to failure to make proper provision for the removal of surplus water. On many fields possibly half of the strength of the soil is used in the production of ten or twelve bushels of wheat, and the

Retailers of the best of everything to eat and wear.

## THE BIG STORE.

Retailers of the best of everything to eat and wear.

### Ladies Wearing Apparel.

Of course you will want to see the new garments for fall and winter. We ask you to think of the advantages plainly discernible in every feature of our splendid new fall lines. We have done a lot of work and are proud to offer you the results. We know you will appreciate them.



#### New Coats For Ladies, Misses and Children.

We should like the privilege of showing you these garments. As far as your buying them is concerned, we will let that take care of itself. We have paid special attention to our line of childrens coats and feel sure that we have something that will just catch your eye. COME—HAVE A LOOK.

#### RAIN COATS.

The most serviceable and convenient of garments. Every lady should have one. We have a very complete line in Oxfords, tans and grays, prices

\$5 to \$20.

#### FUR LINED COATS.

They are bound to become the leading sellers in ladies winter garments for in them there is a happy combination of style and utility. We show them in a great many styles at prices from

\$15 to \$45.

#### NECK FURS.

The neck furs are as popular in early fall as in winter. The evenings are cool and a Fur Scarf is just the fit. They are shown here in an endless variety from the cheapest Coney to Fox Furs.

The prices range from 75c to \$20



## JOHN SYVERSON.

other half is the production of an equal quantity of weeds. By constant cropping without rotation the soil is robbed of the elements necessary for the production of one crop, when by an intelligent diversification those elements might be restored, and during the period of restoration the land would produce bountifully of other crops. Enough has been done in the stock yard, the dairy, the garden, the orchard and the poultry yard to demonstrate the boundless possibilities which lie in these directions, but what has been done is but a drop to the mighty ocean, compared with what we may do.

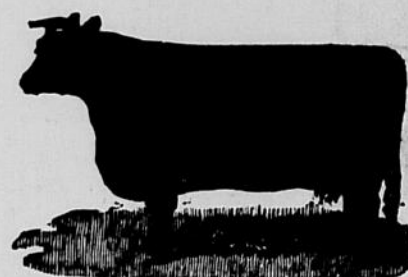
It has not been possible in the past to utilize all the forces of nature, and it is needless to criticize the early settler for not performing the impossible. We have done what the pioneer of all lands have done—taken what first came to our hands, and made what use of it we could. But in view of what may be done it would be a grievous error to assume that because most of the homesteads are taken up we have reached the pinnacle of our development. We are still plodding among the foothills, and before us tower heights still dim in the misty distance, of which existence we are scarcely conscious. We have farmed extensively; now we must farm intensively. The problem is not how many acres we can secure to farm, but how well we can farm each acre. Intensive farming must henceforth be the watchword of the state.—Grand Forks Herald.

#### Nonesuchers Excursions.

Via Chicago Great Western Railway. Only one fare plus \$2.00 for the round trip to points in Alabama, Arizona, Arkansas, Florida, Georgia, Indian Territory, Kansas, Kentucky, Louisiana, Mexico, Mississippi, Missouri, Oklahoma, Tennessee, Texas and Virginia. Tickets on sale the first and third Tuesdays of each month to December inclusive. For further information apply to H. L. Wyand, T. P. A., St. Paul, Minn.

## Greenview Herd, Poland-China & Shorthorns

6 young Bulls and the best lot of Young Pigs for sale ever offered Sired by our great herd boar Rockwell's Chief, sire Dakota Chief



Let us fix you out with a good start in Hogs & Cattle. Don't raise scrub for 2c a when good ones will bring you 4c. Come and see our Stock. Visitors welcome anytime.

BUTLER & UPTON, Cooperstown, N. D.

I Am Recognized A LEADER Of All. My Pressure Is Equalized So Run Easy.

#### A Few Facts to Keep in Mind When in Want of Enamelled Ware.

Our customers say this pall gives universal satisfaction, this week... 70c.

A regular time saver as it cleans easy... 90c. Special... 75c.

It is Popular With the Ladies And Appreciate A Good Thing.

## M. G. EVENSON.