

**BLACKSMITHING!**

The Place for Blacksmithing  
**AS IT SHOULD BE**  
— IS AT —

**MOORE & SANBURN'S**  
Roberts Street, Cooperstown.

**HORSESHOING** receives special attention and is done in the Best and Most Careful manner. **JOBBING** of every description. A trial solicited.

**JAMES MUIR & CO.,**  
**Contractors**  
**and Builders.**

Plans and estimates for building carefully prepared. All carpenter work promptly attended to.

COOPERSTOWN, Dak.

**HOLMAN & NELSON,**  
DEALERS IN  
**GROCERIES AND PROVISIONS,**  
DAZEY, D. T.

Farmers of Northern Barnes and Southern Griggs can rely on getting of us Fresh Goods at reasonable prices.

Agents for  
**Champion Mowers and Binders.**

WHEN YOU WANT

**COAL**

GO TO THE

**GULL RIVER**  
**LUMBER CO.'S**  
**OFFICE.**

**Minneapolis & St. Louis**  
**RAILWAY,**  
AND THE FAMOUS

**Albert Lea Route.**

**TWO THROUGH TRAINS DAILY**  
FROM ST. PAUL AND MINNEAPOLIS  
**TO CHICAGO**

Without Change, connecting with the Fast Trains of all lines for the

**EAST AND SOUTHEAST!**  
The Direct and only Line running through cars between MINNEAPOLIS and

**ES MOINES, IOWA,**  
Via Albert Lea and Fort Dodge.

**SOLID THROUGH TRAINS**  
BETWEEN  
**MINNEAPOLIS AND ST. LOUIS**  
and the Principal Cities of the Mississippi Valley connecting in the Union Depot for all points South and Southwest!

**MANY HOURS SAVED!**  
and the Only Line running Two Trains Daily Kansas City, Leavenworth and Atchison making connections with the Union Pacific and Atchison, Topeka & Santa Fe Railways.

Close Connections made in Union Depots with all trains of the St. Paul, Minneapolis & Manitoba; Northern Pacific; St. Paul & Duluth Railways, from and to all points North and Northwest.

**REMEMBER!** The Trains of the Minneapolis & St. Louis Railway are composed of Comfortable Day Coaches, MAGNIFICENT PULLMAN SLEEPING CARS, and our highly CELEBRATED Palace Dining Cars!

150 Lbs. of Baggage Checked Free. FARE ALWAYS AS LOW AS THE LOWEST! For Time Tables, Through Tickets, etc., call upon the nearest Ticket Agent or write to S. F. BOYD, Gen'l Tkt. & Pass Agt., Minneapolis, Minn.

**THREE MONTHS**  
For 25 Cents.

THE ST. PAUL HERALD will be sent to any address in the United States for three months on trial on receipt of Twenty-five cents.

We want 20,000 3 months trial subscribers. Read our offer of premiums for clubs.

THE HERALD is the best and cheapest, the most entertaining of Family Newspapers.

PREMIUMS FOR CLUBS.  
For a club of 3 subscribers at 25c each we will send an extra copy for three months FREE. For 15 subscribers at 25c each, complete, retail price of which is 75c. For 50 subscribers at 25c each, pair of the best nickel plated roller or ice skates as preferred. For 125 subscribers at 25c each, the choice of any one of the following articles: Webster's unabridged dictionary; breech-loading shotgun; ladies solid silver watch; Gents solid silver watch; a handsome violin; a beautiful music box; plays four tunes and valued at \$30.00 at any retail music store.

AGENTS WANTED.  
We will give a very liberal cash commission to all who will act as agents for the HERALD in securing three months trial subscribers. Send for sample copy of paper.

CHAYLER & NICOLS,  
41 E. 3rd St., St. Paul, Minnesota.

**COOPERSTOWN.**

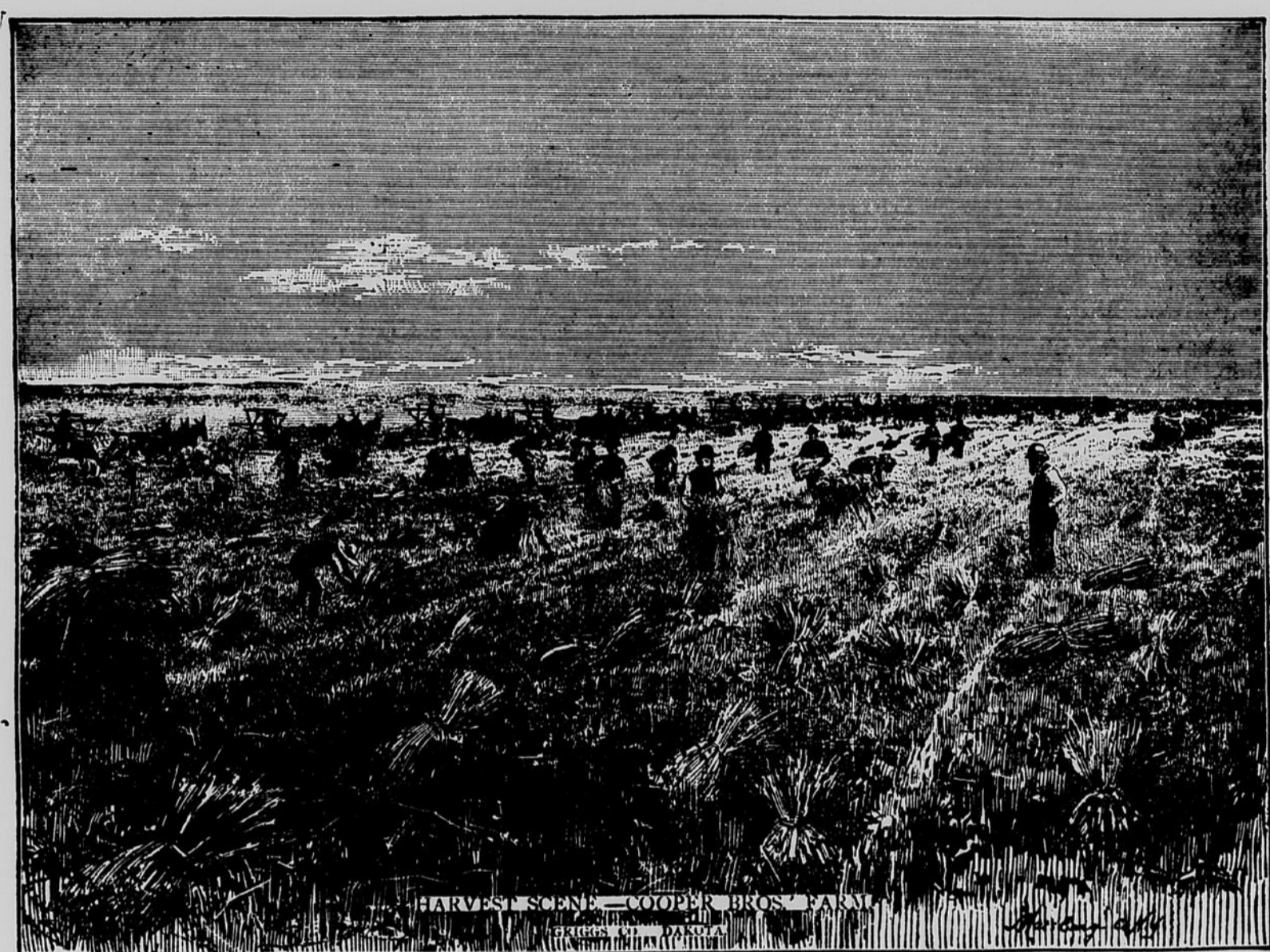
A prominent capitalist of Maine, who owns wild lands in nearly every western state and territory, said, over his own signature, in a letter to the Kennebec Journal, over a year ago: "Of my landed interests in the west I regard my North Dakota property as, ultimately, of the most value, and my acres in Griggs county as the most valuable of North Dakota investments, as far as quality and character of the soil are concerned." The county is one of the smallest in the territory, 720 square miles in area, made up of gently rolling lands, lower than the coteau lands of the Missouri, and some 200 feet higher

than the Red River Valley—all magnificent wheat land, drained by the Sheyenne river and its main branch, which pass through the county, and diversified by beautiful lakes and productive meadows. The spring floods and the autumn drouths affect this "heart of Dakota" less than any other section of the wheat belt.

The capital of the county is Cooperstown, the terminus of the Sanborn & Cooperstown branch of the Northern Pacific. The road was designed to end here, and here in all probability the terminus will remain. Directly north of us is the unproductive reservation of the Cuthead Sioux, and Devil's Lake, northeast is the territory of the Manitoba

railroad, whose line from St. Paul to Chicago is a diagonal, as distinguished from the right angle which the branch makes with the Northern Pacific railroad. To the northwest of us, but a few miles, are Carrington and Minnewaukan, with a branch of the Northern Pacific railroad extending from Jamestown, and obviating the extension of our branch in that direction. An extension east or west would only be made after the lapse of years. A great country trade naturally results for Cooperstown. Nearly a thousand car loads of wheat have already been shipped from this point this season, a showing that can be equaled by no other town of 500 inhabitants in the world. A fine court house

of red brick, erected at an expense of \$30,000, insures the holding of the county seat for all time, and ornaments the town. A commodious hotel, erected at an expense of \$20,000, furnishes accommodation to the traveler, and two enormous elevators are engaged day and night in handling the product of the county. A magnificent high school building, and numerous churches, demonstrate the respectability and intelligence of the people. Timber is abundant upon the river and wood is furnished in town at \$5 per cord. The roads are at all times in admirable condition, and no pleasanter spot for a country life could be selected in the west.



HARVEST SCENE—COOPER BROS. FARM  
GRIGGS COUNTY, DAKOTA

Nine hundred car loads of wheat, at ten tons per car, have been shipped from the Cooperstown station this season. This is equivalent to 300,000 bushels. At an average cash valuation of 70 cents per bushel, \$210,000 have been distributed to the farmers for wheat alone. The population of Griggs

county is about 2,000, and the wheat distribution has been over \$100 to every man, woman, and child within its limits. In addition, we have had a market well supplied with live stock, poultry, butter, cheese, eggs, garden produce, and other cereals besides wheat. Probably no tract of land, of equal

size in the world, is capable of greater production than this most fertile territory, of the most fertile nation, of the most fertile continent, of the most fertile planet of which we know. Probably no community of the same number of people in this territory, or in any other new county, were ever

so happily situated, financially, on the average, as our people. We have still room for more settlers. The facts stated, regarding the shipment of grain at this point will be verified, to the doubting, by the abductions of the managers of the elevators, R. C. Cooper and G. N. Stork.

Any inquiries regarding the county, directed to the Courier Office, will be cheerfully answered; and any person desiring to purchase improved, and unimproved, real estate, cheap for cash, or in exchange for unincumbered city property in the Northwest, can be accommodated with fine sections, of early selection, without commission, by the **COURIER.**